

PART OF THE N.W 1/4 & THE N.E. 1/4, SEC. 28, T.6N., R.1W., S.L.B. & M.

RUSHTON ADDITION

BLOCKS 6 & 7

FOR COMPLETE ENG DATA SEE ORIGINAL DEDICATION PLAT IN BOOK 5, PAGE 18 OF RECORDS.

TAXING UNIT: 25

21ST

SEE PAGE 6

IN OGDEN CITY SCALE 1" = 50'

CALVIN & CONNIE KEYES (140090007) (685 SQ FT)

STREET

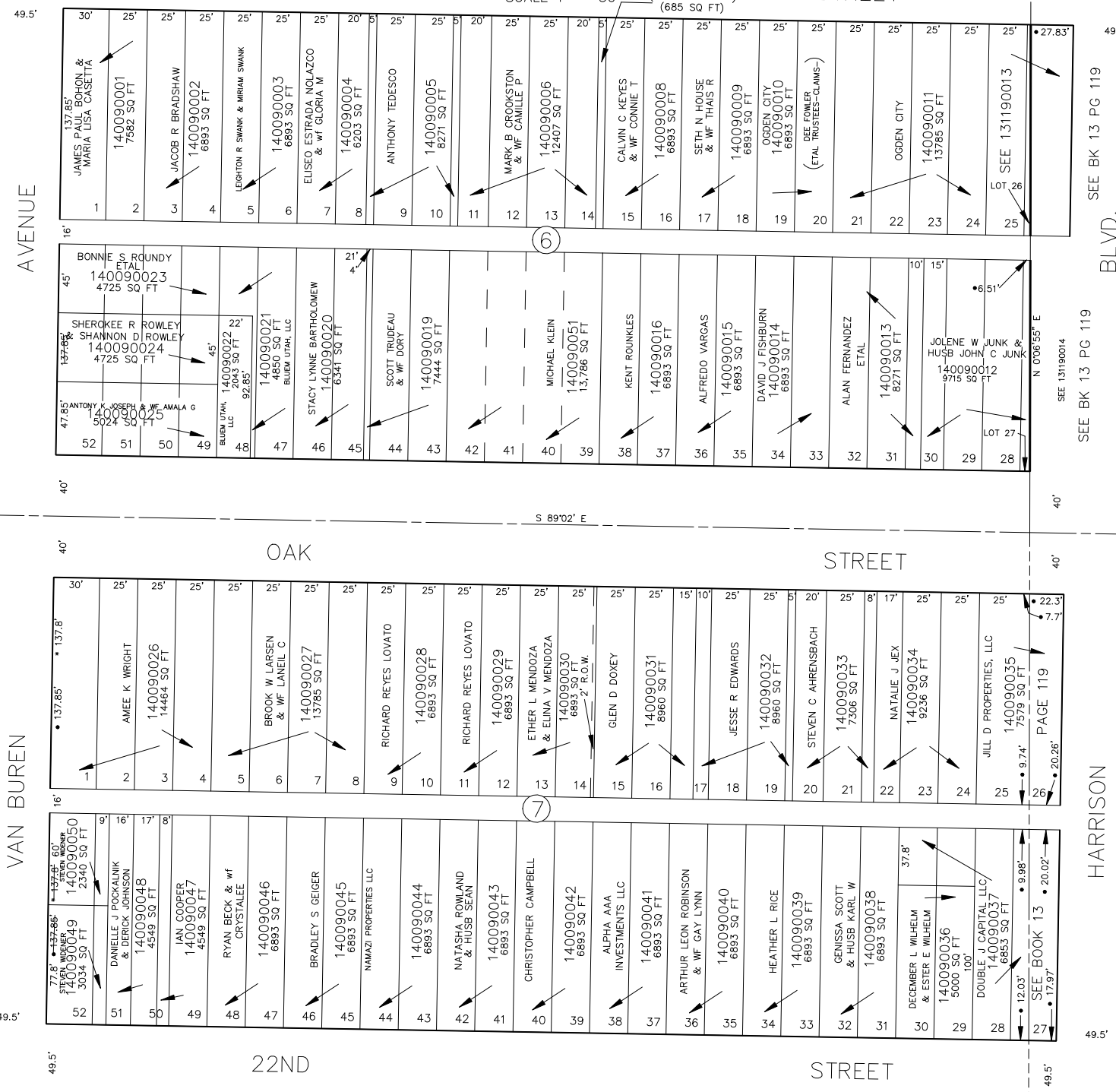
SEE PAGE 8

SEE BK 13 PG 119

SEE BK 13 PG 119

SEE BK 13, PAGE 119

SEE BK 13



OGDEN CITY ENG. DEPT. PLATS ORIG. DED. PLAT

SEE BOOK 2, PAGE 36

FOR TAX PURPOSES ONLY

S 89°22' E BM 4-94